



Filename: **LIGHT005-040 MG 15W with diffuser**

Manufacturer: Lightart

Lamp: A19 15W LED FEIT

Lamp Output: Total luminaire Lumens: 1045.3

Max Candela: 118.7 at Horizontal: 22.5°, Vertical: 57.5°

Input Wattage: 12.5

Luminous Opening: Rectangle w/Luminous Sides (L: 24", W: 24", H: 24")

Test: LM-79-08

Test Lab: Orb Optonix, Inc.

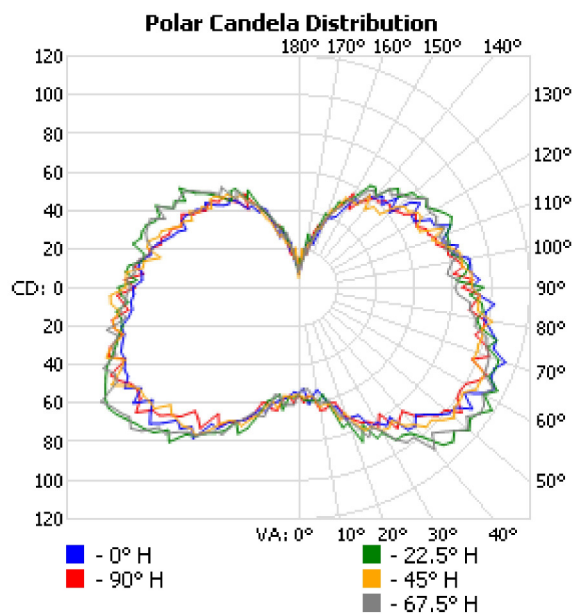
Photometry : Type C

CIE Class: General Diffuse

Cutoff Class: Noncutoff

Zonal Lumen Summary

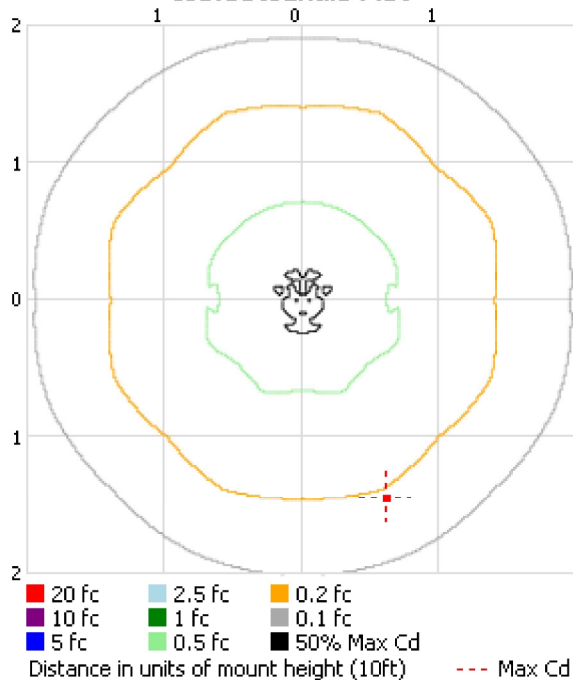
Zone	Lumens	% Luminaire
0-30	61.0	5.8%
0-40	118.3	11.3%
0-60	293.4	28.1%
60-90	311.1	29.8%
70-100	299.3	28.6%
90-120	257.0	24.6%
0-90	604.5	57.8%
90-180	440.9	42.2%
0-180	1,045.3	100%



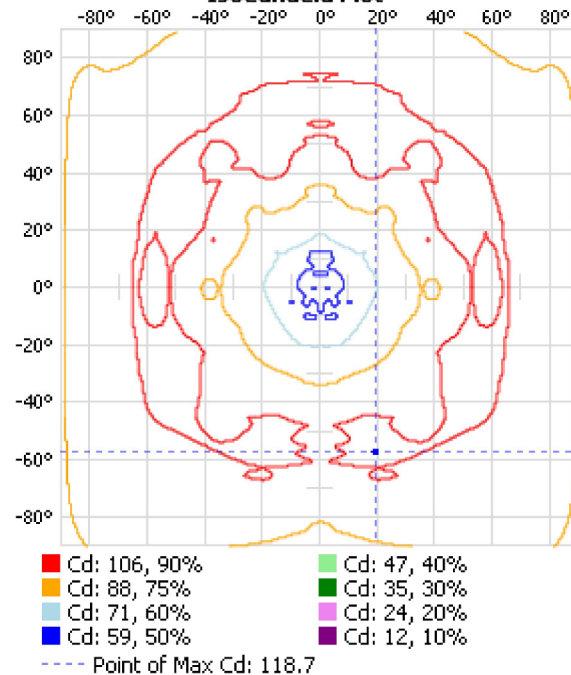
Lumens Per Zone

Zone	Lumens	% Total	Zone	Lumens	% Total
0-10	5.6	0.5%	90-100	93.9	9%
10-20	18.6	1.8%	100-110	85.7	8.2%
20-30	36.8	3.5%	110-120	77.4	7.4%
30-40	57.3	5.5%	120-130	65.9	6.3%
40-50	78.6	7.5%	130-140	51.1	4.9%
50-60	96.4	9.2%	140-150	36.4	3.5%
60-70	105.7	10.1%	150-160	21.0	2%
70-80	104.8	10.0%	160-170	8.0	0.8%
80-90	100.6	9.6%	170-180	1.6	0.1%

Isofootcandle Plot



IsoCandela Plot



Illuminance at a Distance

	Center Beam fc	Beam Width
1.7ft	19.1 fc	
3.3ft	5.07 fc	
5.0ft	2.21 fc	
6.7ft	1.23 fc	
8.3ft	0.80 fc	
10.0ft	0.55 fc	

Coefficients Of Utilization - Zonal Cavity Method

Effective Floor Cavity Reflectance: 20%

RCC %:	80				70				50				30				10				0
RW %:	<u>70</u>	<u>50</u>	<u>30</u>	<u>0</u>	<u>70</u>	<u>50</u>	<u>30</u>	<u>0</u>	<u>50</u>	<u>30</u>	<u>20</u>	<u>50</u>	<u>30</u>	<u>20</u>	<u>50</u>	<u>30</u>	<u>20</u>	<u>50</u>	<u>30</u>	<u>20</u>	<u>0</u>
RCR: 0	1.09	1.09	1.09	1.09	1.02	1.02	1.02	.58	.88	.88	.88	.75	.75	.75	.63	.63	.63	.58			
1	.95	.88	.82	.77	.87	.82	.76	.39	.70	.66	.62	.58	.55	.52	.48	.46	.44	.39			
2	.84	.74	.66	.59	.77	.69	.61	.30	.58	.52	.47	.48	.44	.40	.39	.36	.33	.28			
3	.75	.63	.54	.47	.69	.59	.50	.23	.49	.43	.37	.41	.36	.31	.33	.29	.26	.22			
4	.68	.55	.45	.38	.63	.51	.42	.18	.43	.36	.30	.36	.30	.25	.29	.24	.21	.17			
5	.62	.48	.39	.32	.57	.45	.36	.15	.38	.31	.25	.31	.26	.21	.25	.21	.17	.14			
6	.57	.43	.33	.27	.52	.40	.31	.13	.34	.27	.21	.28	.22	.18	.23	.18	.14	.11			
7	.52	.38	.29	.23	.48	.35	.27	.11	.30	.23	.18	.25	.19	.15	.20	.16	.12	.10			
8	.48	.34	.26	.20	.44	.32	.24	.09	.27	.21	.16	.23	.17	.13	.18	.14	.11	.08			
9	.45	.31	.23	.17	.41	.29	.21	.08	.25	.18	.14	.21	.15	.12	.17	.13	.09	.07			
10	.42	.29	.21	.15	.39	.26	.19	.07	.23	.16	.12	.19	.14	.10	.16	.11	.08	.06			

Luminaire Report Summary

IESNA:LM-63-2002
[TEST] LM-79-08
[TESTLAB] Orb Optronix, Inc.
[ISSUEDATE] 08-25-2017
[MANUFAC] Lightart
[LAMP] A19 15W LED FEIT
[_TOTALLUMINAIRELUMENS] 1045.3
[_ABSOLUTE LUMENS] 1045.3168928325
[OTHER] with diffuser

FILE: CREATED USING ABSOLUTE PHOTOMETRY
FILE: CANDELA MULTIPLIER: 1
FILE: VERTICAL ANGLES: 73, HORIZONTAL ANGLES: 9
FILE: COORDINATE SYSTEM: TYPE C
FILE: UNIT OF MEASURE: STANDARD
FILE: BALLAST FACTOR: 1

Photometrics Pro 1.3.29 copyright 2003-2017 by jSolutions, Inc.
Reported data calculated from manufacturer's data file, based on IES recommended methods.