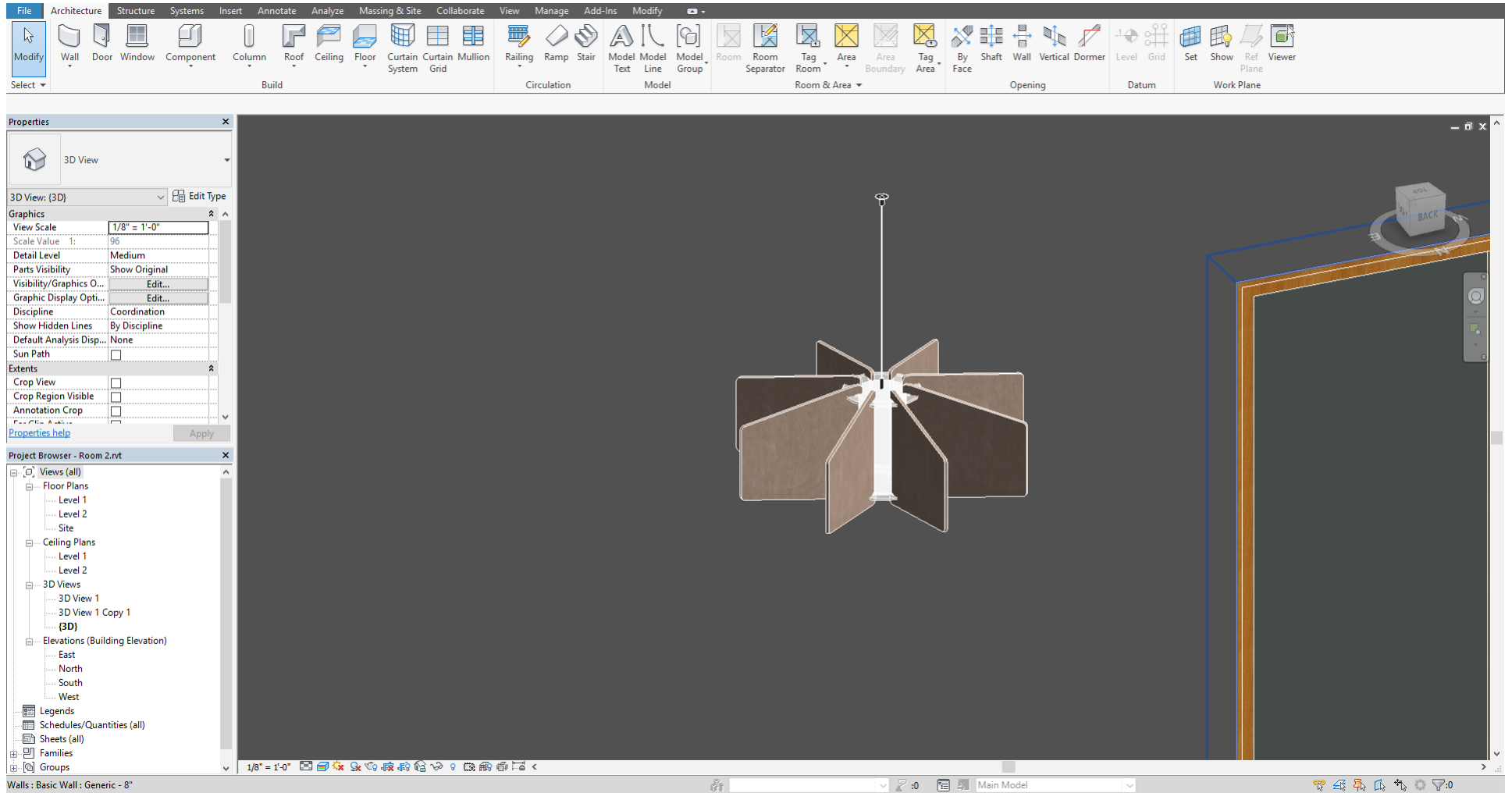


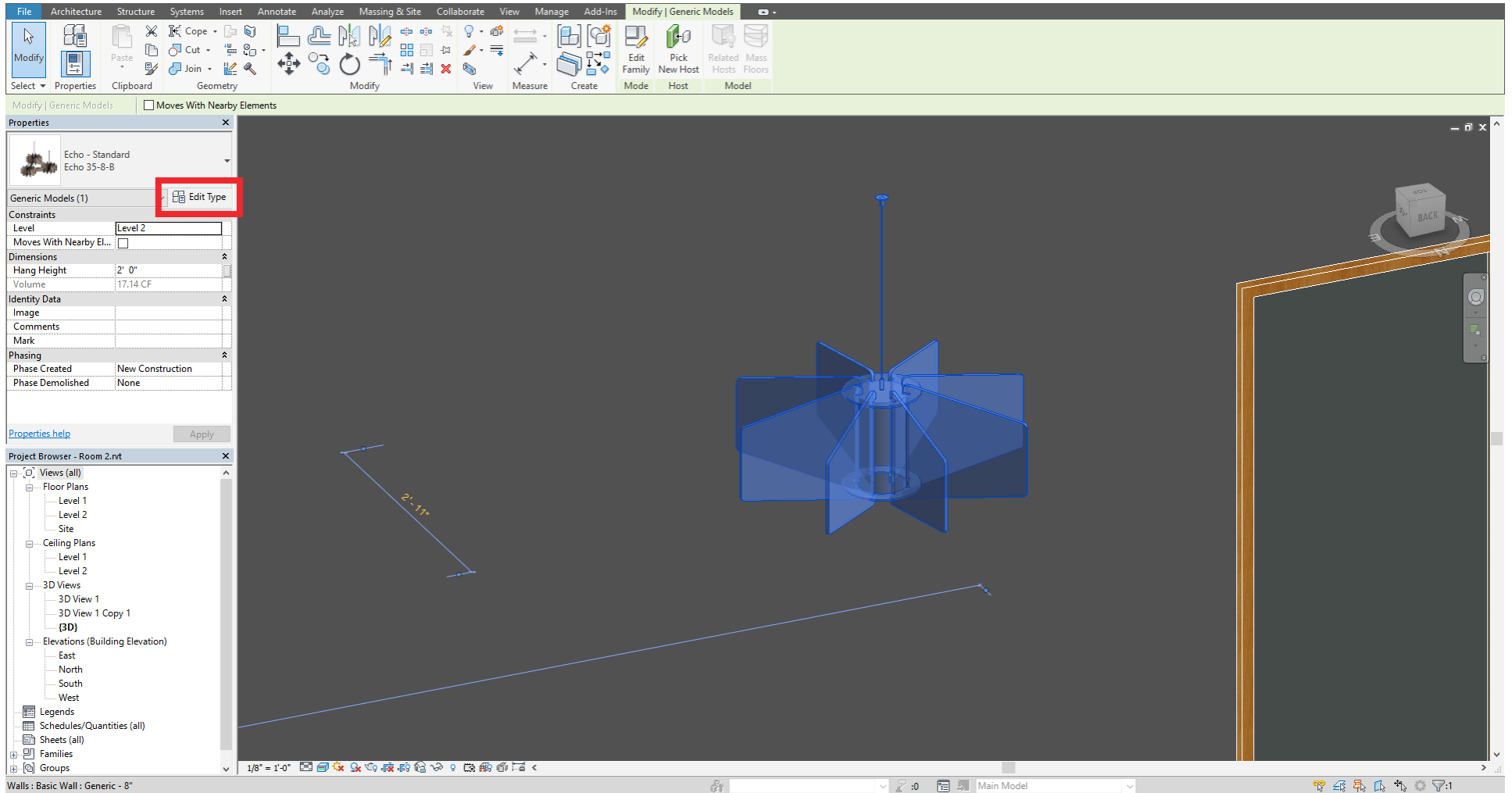
HOW TO USE LIGHTART FELT TEXTURES IN REVIT

Open “Echo - Standard.rfa” in Revit



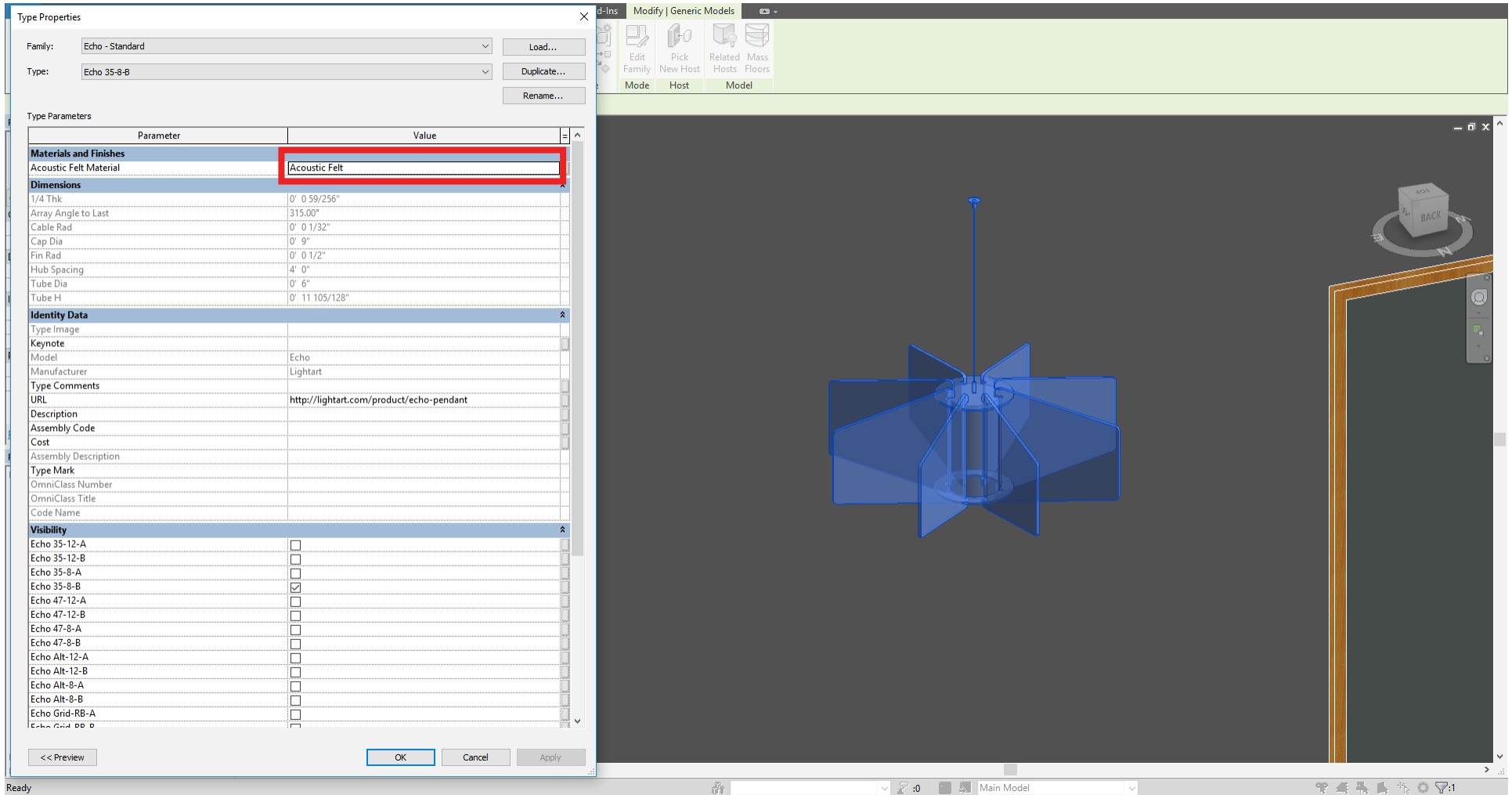
HOW TO USE LIGHTART FELT TEXTURES IN REVIT

Place the model in your project. Select the model, and click Edit Type in the Properties tab



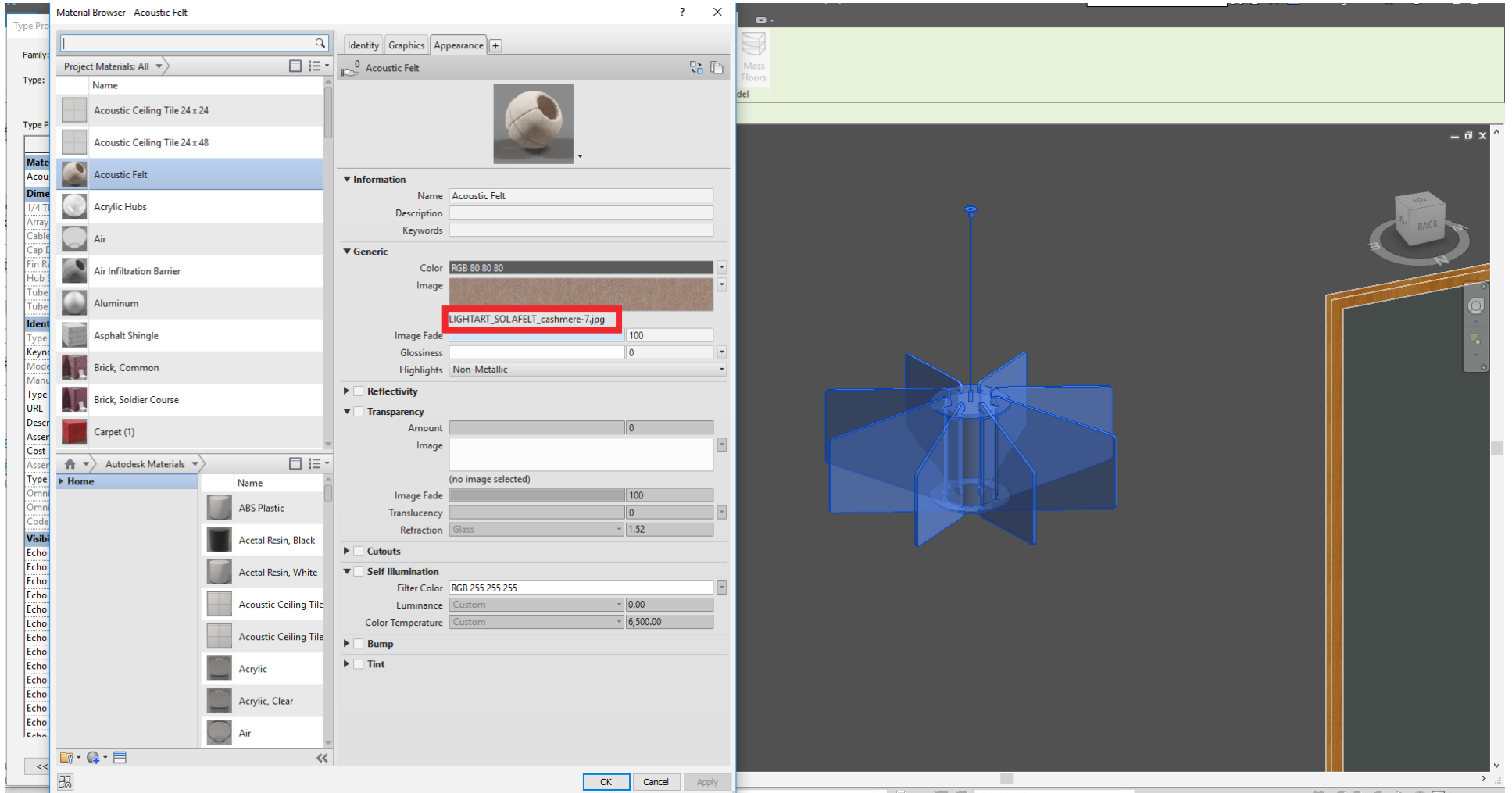
HOW TO USE LIGHTART FELT TEXTURES IN REVIT

In the Type Properties window, click the Acoustic Felt Material parameter, then click the ellipsis symbol that appears at the right. This opens the Material Browser



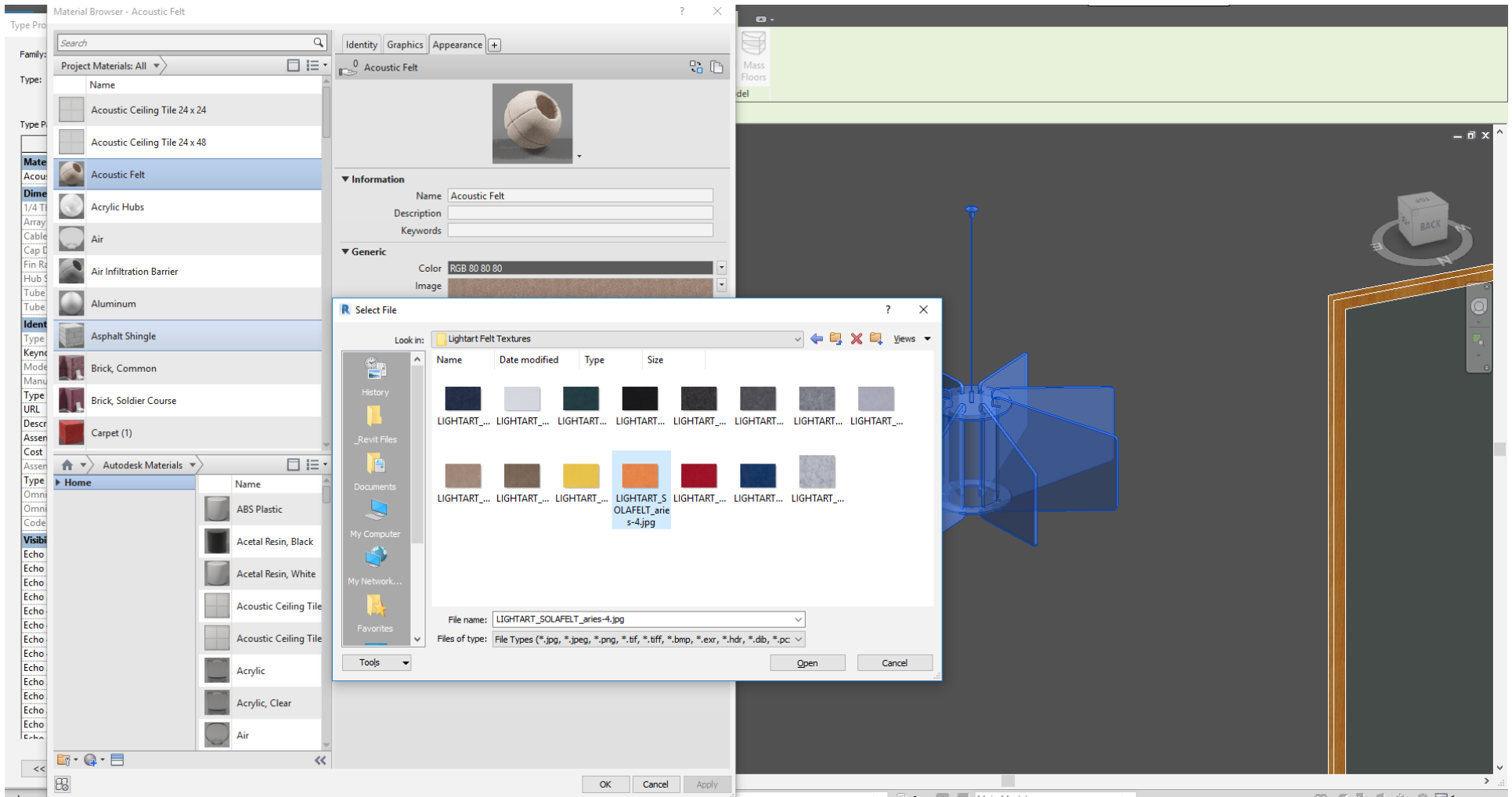
HOW TO USE LIGHTART FELT TEXTURES IN REVIT

You will have to link to the image file for your desired color. Click the existing image file name (or missing link) to open the file browser



HOW TO USE LIGHTART FELT TEXTURES IN REVIT

Navigate to where you downloaded the model.
The textures should have been included in the download. Select the color you want, and click open -> Apply -> OK



HOW TO USE LIGHTART FELT TEXTURES IN REVIT

The texture image should now be applied to the fins

